

Data Sheet

The Smart-IR DNR Day/Night IR Dome Camera

3.6mm board lens/ IR LED Built-in 24pcs



GENERAL FEATURES

- 1/3" Sony Super HAD II CCD
- 0.000006 Lux (IR LED on)
- Digital Wide Dynamic Range
- 2D DNR, Max. 70% of Disk Saving Effect with Superb DNR Effect
- Highest Resolution: Vivid Sharp Picture in Completely Darkness
- Adjustable Motion Detection Area, Privacy Mask Area
- Multi Language OSD Control Function
- 3-Axis Gimbal

3D-DNR (3Dimensions-Digital Noise Reduction)



Smart-IR's unique 3D Adaptive Noise Reduction Filter effectively removes the Noise from the image signal, providing a more vivid and clear image. When using the AGC in low-lightings,

clear image can be obtained by reducing Noise, and even in darker areas, brighter images can be obtained by using higher AGC.



Maximum 600 TV Lines



Smart-IR's unique Supreme Resolution Unit allows 600 TV Lines of high-resolution image, and a clear image even in low-light environments.



Low illumination 0.00001 Lux



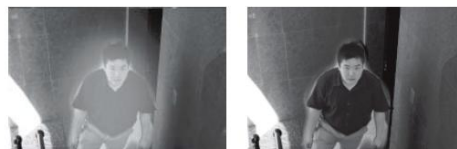
With an incredibly minimum illumination of 0.00001Lux Camera can capture good images even in extremely low light conditions and related noises are significantly reduced by the ultra advanced 3D-DNR (Digital Noise Reduction) technology.



Smart-IR



No Saturation Image, Vivid Image in darkness!
"Smart IR" camera makes very sharp video image in darkness!
This technology eliminates saturation of video image of the closer object in darkness by control of the IR sensitivity. Saturation never happens in our "Smart IR" cameras, you can enjoy vivid image in any dark condition!



SPECIFICATIONS

MODEL	TW-N237DNR
Sensor	1/3" SONY Super HAD II CCD
Total Pixels	NTSC=811(H)*508(V) / PAL=795(H)*595(V)
Effective Pixels	NTSC=768(H)*494(V) / PAL=752(H)*582(V)
Scanning System	2:1 Interlace
Synchronization	Internal
O.S.D	Built – in
Backlight	HSBLC / BLC / OFF Selectable
Resolution	600TV Lines
S/N Ratio	52dB (AGC Off)
Min. Illumination	0.00001Lux (Sens-up x258)
White Balance	ATW / AWB / Manual
Electronic Shutter Speed	AUTO (1/50sec, 1/60sec ~ 1/120,000sec) / Manual
Gain Control	HIGH / MIDDLE / LOW / OFF Selectable
2D-DNR	ON / OFF
D-WDR	ON / OFF (Level Adjustable)
Motion Detection	ON / OFF (4 Zone)
PRIVACY	ON / OFF (8 Zone)
MIRROR	ON/OFF
Park Line	ON/OFF
SHARPNESS	ON/OFF (Level Adjustable)
D&N Selection	COLOR / BW / AUTO/EXT
Blemish Compensation	Auto: 64 Point
Power	DC 12V
Power Consumption	CDS OFF: 100mA±10%, CDS ON: 250mA±10%
Lens	3.6mm Fixed Board Lens
Operating Temperature/Humidity	-10°C ~ +50°C / RH 80% Max.
Dimension (mm)	112(W)*87(H)
Weight	200g



Note: Design and Specifications are subject to change without prior notice
