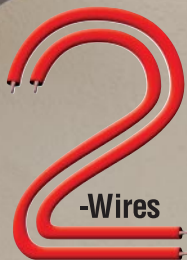




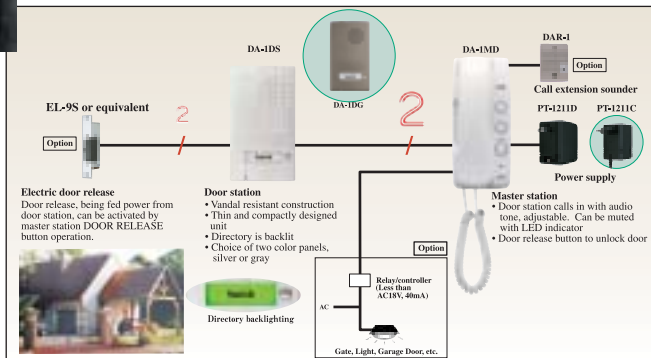
TWO-WIRE ELECTRIC LOCK DOOR PHONE KIT

Provides Entry Security for Your Residence

DA-1AS/DA-1AG



Simplified Two-Wire Door Entry Kit

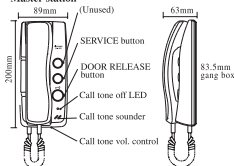


System features

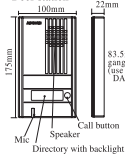
- Connect Electric Door Release with same two wires from Door station. Requires no extra power supply for door release.
- Existing doorbell or chime wires can be utilized (Disconnect from transformer)
- Master station is equipped with DOOR RELEASE and one FUNCTION button to turn on entrance light, etc.
- Optional call extension sounder

Names & Dimensions

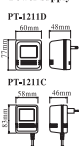
• Master station



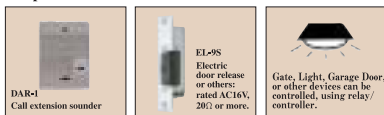
• Door station



• Power supply



Options



Specifications

- Power source: AC 15V, supplied from Power supply
- Calling: Electronic tone(while the button is depressed). w/adj. Vol. or muted
- Communication: Simultaneous with handset.
- Weight: DA-1MD: approx. 370g. DA-IDS: approx. 270g. PT-1211C: 400g. PT-1211D: 430g.
- Wiring: 2 wires, polarized from door to DA-1MD
- Wiring distance: (1)Door Release (2)Door station (3)Master station (4)Power supply

	∅ 0.6mm	∅ 0.8mm	∅ 1.0mm
(1)-(2)-(3)-(4)	110m	200m	310m
(3)-(4)	55m	100m	155m

- DA-1AS Kit consists of DA-1DS, DA-1MD & PT-1211C or PT-1211D.
- DA-1AG Kit consists of DA-1DG, DA-1MD & PT-1211C or PT-1211D.
- PT-1211C/D power supply is designed for exclusive use of DA-1MD

Distributed by:

AIPHONE[®]
Providing Peace of Mind

http://www.aiphone.com/
Printed in Japan